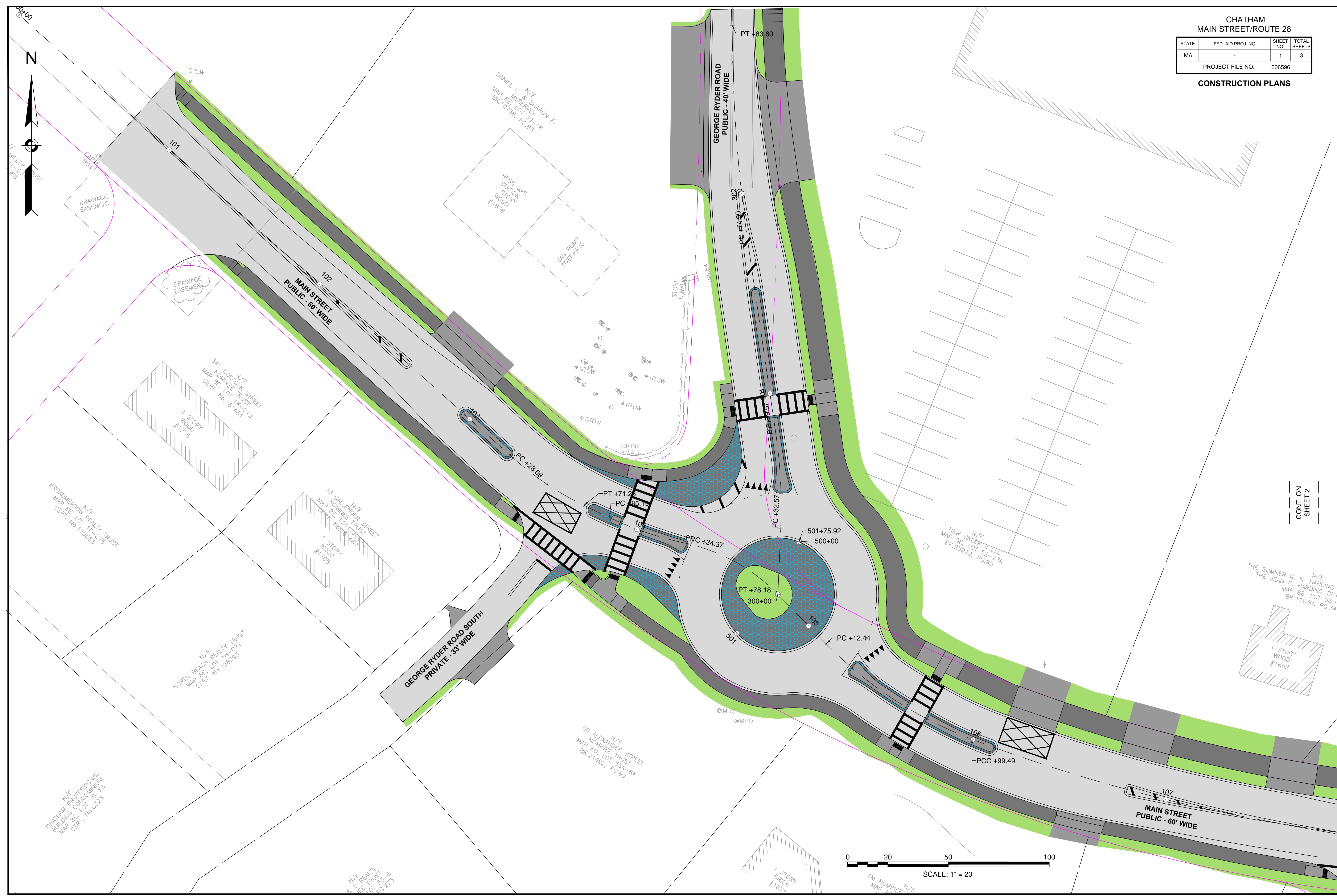


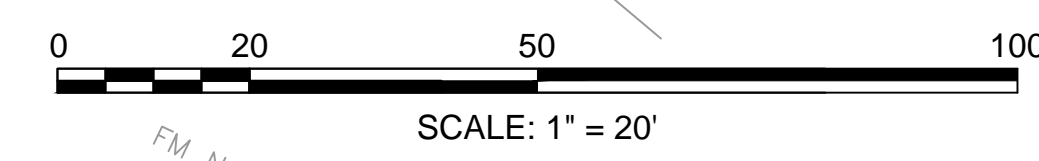
CHATHAM
MAIN STREET/ROUTE 28

STATE	FED. AID PROJ. NO.	SHEET NO.	TOTAL SHEETS
MA	-	1	3
PROJECT FILE NO.		606596	

CONSTRUCTION PLANS



CONT. ON
SHEET 2



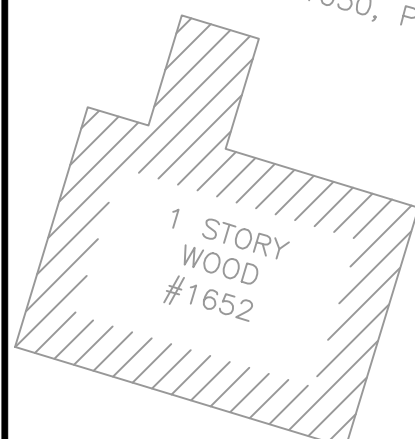
CHATHAM
MAIN STREET/ROUTE 28

STATE	FED. AID PROJ. NO.	SHEET NO.	TOTAL SHEETS
MA	-	2	3
PROJECT FILE NO.		606596	

CONSTRUCTION PLANS

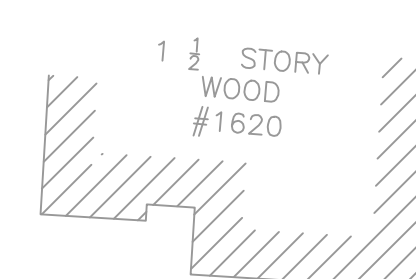


N/F
THE SUMNER G. N. HARDING TRUST OF 1997
THE JEAN C. HARDING TRUST OF 1997
MAP 8E, LOT 53-27
BK.11030, PG.34



N/F
THE SUMNER G.N. HARDING
TRUST OF 1997
MAP 8E, LOT 1-H3
BK.11030, PG.33

N/F
THE SUMNER G. N. HARDING TRUST OF 1997
THE JEAN C. HARDING TRUST OF 1997
MAP 9E, LOT 1-11
BK.11030, PG.34



N/F
TOWN OF CHATHAM
MAP 9E, LOT 2-10
BK.15361, PG.181

N/F
TOWN OF CHATHAM
MAP 9E, LOT 3-9
BK.18912, PG.179

108

PT #47.99

109

110

111

112

113

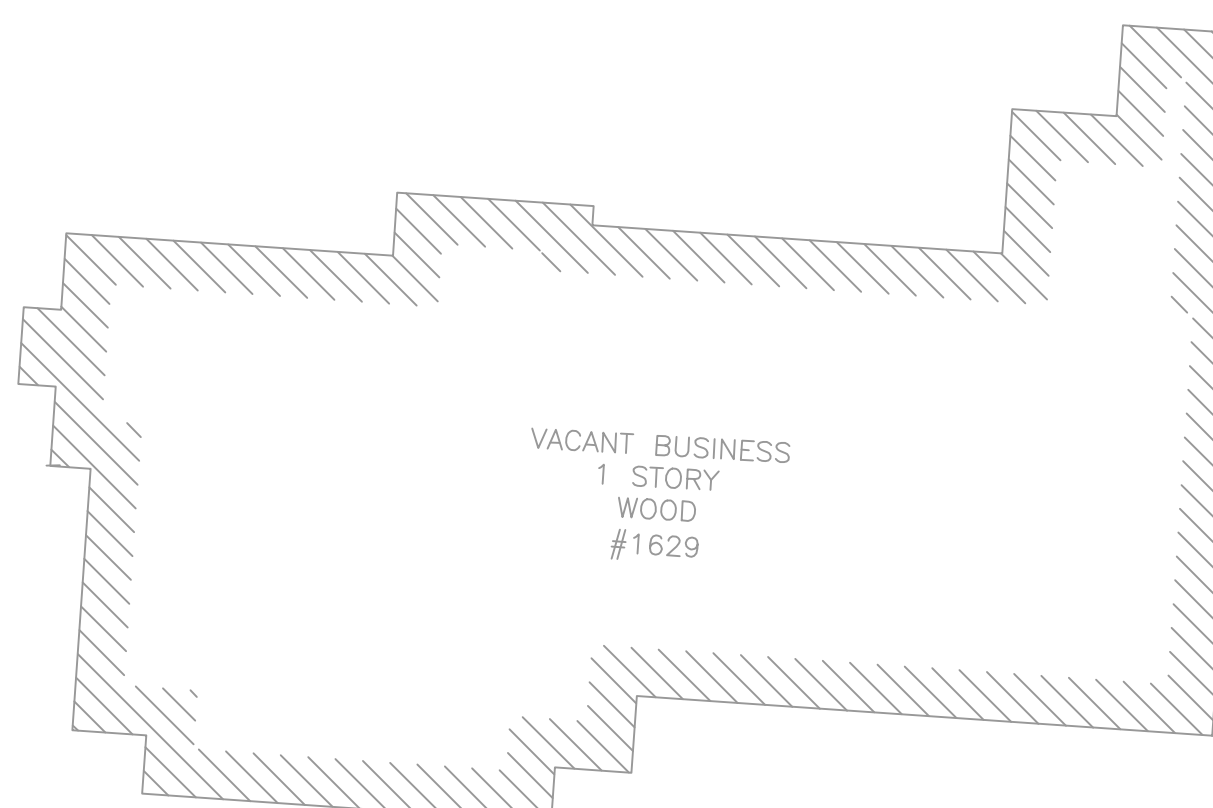
MAIN STREET
PUBLIC - 60' WIDE

MAIN STREET
PUBLIC - 60' WIDE

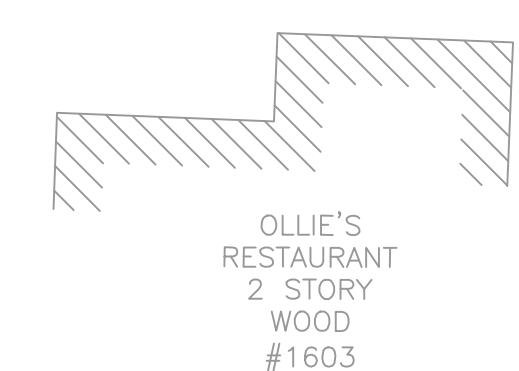
SEAUANSET ROAD
PUBLIC - 35' WIDE

CONT. ON
SHEET 1

N/F
LOWER CAPE VENTURES, LLC
MAP 8D, LOT 1-8
BK.19749, PG.3



N/F
BOTSOLIS FAMILY REALTY TRUST
MAP 9D, LOT 45-14B
BK.22936, PG.8

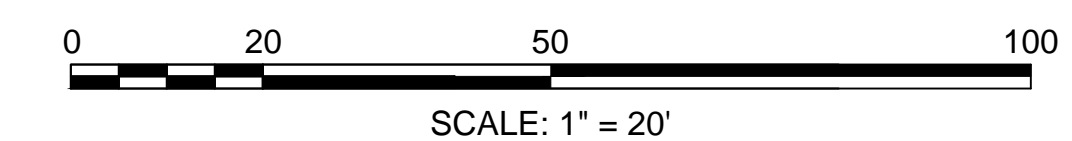
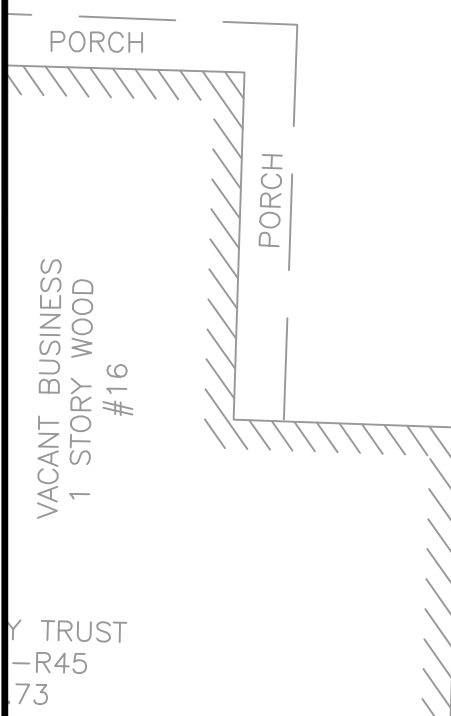


N/F
BARN HILL PROPERTIES, INC
MAP 9D, LOT 44-12A
BK.20908, PG.180

CONT. ON
SHEET 3

LARRY'S PX
RESTAURANT
1 STORY
WOOD
#1579-1595

N/F
BARN HILL PROPERTIES, INC
MAP 9D, LOT 43-12
BK.21678, PG.163



SCALE: 1" = 20'



N/F
TOWN OF CHATHAM
MAP 9E, LOT 3-9
BK.18912, PG.179

CHATHAM
MAIN STREET/ROUTE 28

STATE	FED. AID PROJ. NO.	SHEET NO.	TOTAL SHEETS
MA	-	3	3
PROJECT FILE NO.		606596	

CONSTRUCTION PLANS

26' WIDE
DRAINAGE EASEMENT

N/F
CAPE COD COMMERCIAL
HOOK FISHERMAN'S ASSOCIATION, INC.
MAP 9E, LOT 5-8
BK.24712, PG.341

2 STORY
WOOD
#1566

N/F
1566 MAIN STREET, LLC
MAP 9E, LOT 6-7
BK.23319, PG.134

N/F
RIVERSIDE REALTY TRUST
MAP 9E, LOT 7-6A
BK.16438, PG.327

WHELDEN WAY
PRIVATE - 33' WIDE

119+82.56

119
MAIN STREET
PUBLIC - 60' WIDE

PT +36.83

118

PRC +66.40

117

PC +74.98

400+00

401+75.92

PRC +38.34

200+00

PT +90.47

401

PC +47.42
PT +61.14

BRICK WALK

DUNKIN DONUTS
2 STORY
WOOD
#595

1 STORY
WOOD
MOTEL

N/F
GRS INVESTMENTS, LLC
MAP 9D, LOT 5-17
BK.23177, PG.334

N/F
GRS INVESTMENTS, LLC
MAP 9D, LOT 6-16
BK.23177, PG.334

N/F
JOSEPH P. BUCKLEY, JR.
MAP 9D, LOT 4-18
BK.9694, PG.51

CONT. ON
SHEET 2

N/F
BARN HILL PROPERTIES, INC
MAP 9D, LOT 43-12
BK.21678, PG.163

BARN HILL ROAD
PUBLIC - 30' WIDE

PC +71.14

202

PT +09.17

